



Sealing solutions for pre-insulated pipes

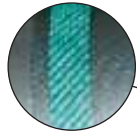


*Reliable installation
with built-in performance
That's quality!*

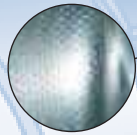
Reliable installation

No matter what level of performance a joint sealing system displays, if it cannot be installed correctly and consistently it will fail.

Installing heat-shrink sleeves is really very simple but it is still vital to ensure that every part of the sleeve receives a minimum amount of heat. We now incorporate a unique solution to this problem by supplying our sleeves with **dimpled backing**. These dimples vanish permanently on receiving the correct amount of heat thus providing a visual guide to the installer, and, most importantly, post installation proof to the coating inspector.



Thermochromic indicator before installation

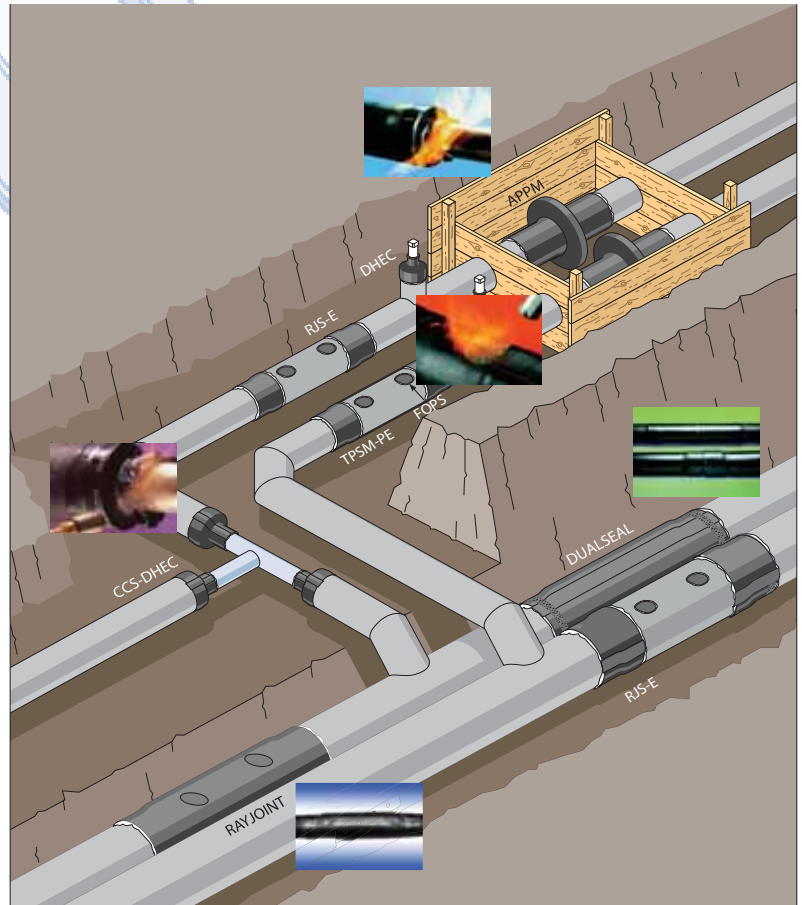


Dimpled backing before installation



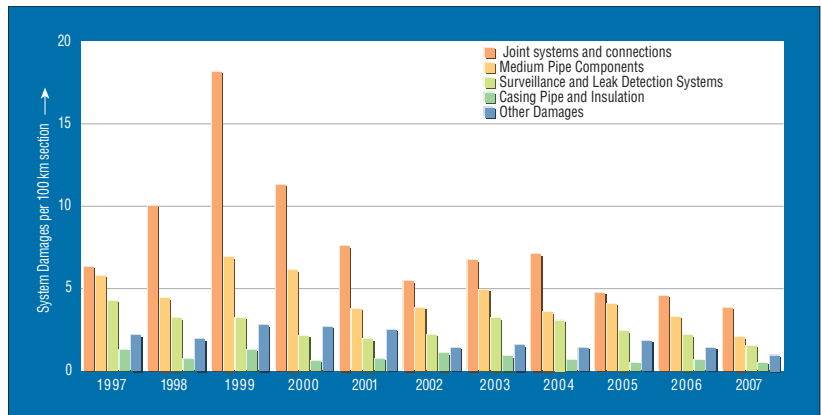
DualSeal III not only has dimpled backing but also includes a special **thermochromic indicator** on the sleeve edges. This ensures that the high temperature hotmelt coated edges receive slightly more heat than the central sealant area of the sleeve - what could be simpler for both installer and inspector.

Full product range



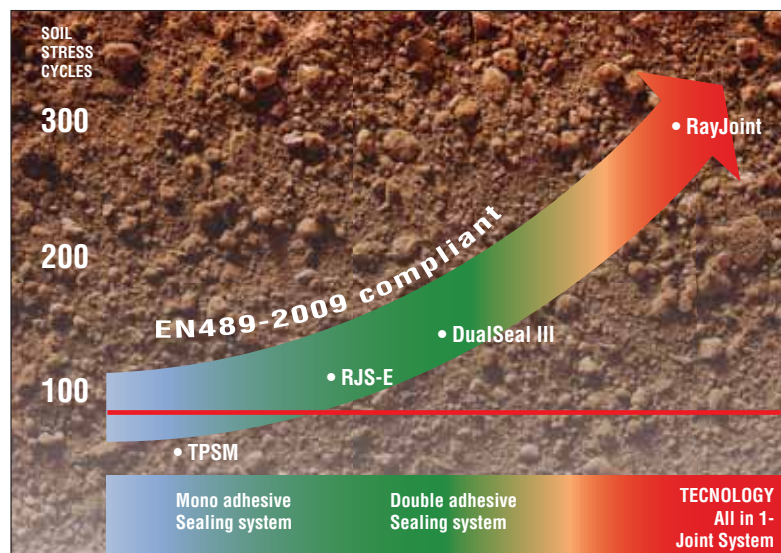
Built-in performance

It's a well know fact that most failures on pre-insulated pipes occur in the joint area. This is due to the repeated expansion and contraction during operation and can cause breakdown of the joint sealing systems.



AGFW Damage statistics of pre-insulated pipe network

The current edition of the European Norm for pre-insulated pipes EN 489-2009, stipulates that joint sealing systems withstand a minimum of 100 cycles when tested for soil stress resistance using sand with max 0.5% humidity.



Covalece DualSeal III (150 cycles) and Rayjoint (300 cycles) both exceed this requirement by a considerable margin, being designed for long term survival under the toughest conditions.

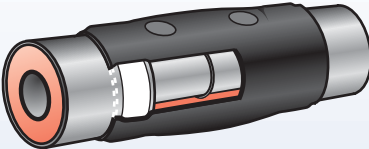
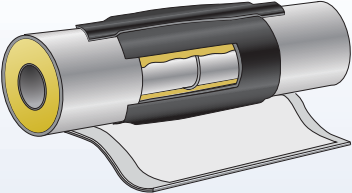



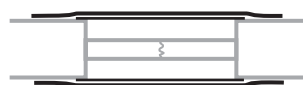
For standard applications Covalece RJS-E is used.

RJS-E meets all requirements of EN489-2009.

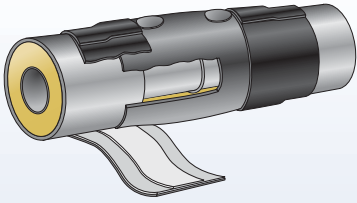
For less demanding applications Covalece TPSM is used when expected pipe movements and soil stresses are moderate.

Selection is simple: - You choose the level of performance needed
- We provide the solutions

Covalence joint and technology overview

	PRODUCT	
	RayJoint	DualSeal III
TYPE JOINT		
Oversized casing		
Heat-shrinkable casing (crosslinked and non crosslinked)		
All-in-one-joint (crosslinked)		●
Metal sheet casing		●
Soil stress resistance 0,5 % sand humidity (EN489)	up to 300 cycles	150 cycles
Soil stress resistance 8,0 % sand humidity	1000 cycles	1000 cycles
HDPE backing (high shrink force = 3N/mm ²)	●	●
PCI / Dimpled backing		●
Tubular/Wraparound	T	W
Product features and benefits	<ul style="list-style-type: none"> • High wall thickness adapted to the corresponding casing pipe thickness • Superior performance against soil stresses • Fully crosslinked HDPE backing with high shrinkforce • No additional outside sealant required • Pressure testable before foaming • Smart economics: superior performance for low installation cost 	<ul style="list-style-type: none"> • High performance sealing system consisting 2 sealing zones • Viscoelastic sealant, barrier against moisture, excellent flow and fill • High shear resistance hotmelt adhesive • High mechanical resistance HDPE backing with high shrinkforce • Easy installation • Antislip zone • Unisleeves offer fast installation • Dimpled backing offers a permanent change indicator (PCI) resulting in reliable installations and full inspectability at any time after installation • Thermochromic indicator on the sleeve edges

RJS-E



100 cycles

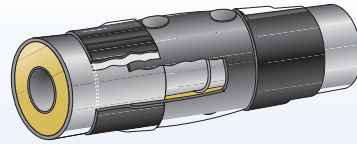
1000 cycles



W

- High performance sealing system consisting 2 sealing zones
- Viscoelastic sealant, barrier against moisture, excellent flow and fill
- High shear resistance hotmelt adhesive
- High mechanical resistance HDPE backing with high shrinkforce
- Easy installation
- Unisleeves offer fast installation
- Dimpled backing offers a permanent change indicator (PCI) resulting in reliable installations and full inspecability at any time after installation.

TPSM-PE



> 100 cycles



T

- Available for complete casing pipe diameter range from 90 to 800 mm
- Individually packed in polybag to avoid contamination
- High mechanical resistance HDPE backing with high shrinkforce
- Very easy installation
- Dimpled backing offers a permanent change indicator (PCI) resulting in reliable installations and full inspecability at any time after installation.

Global sales and support network

Berry Plastics representatives around the world are committed to provide top quality service in bringing to their customer's assistance and expertise in:

- product selection
- design
- technical support

Berry Plastics, through its worldwide sales and support networks, and alliances with local manufacturing companies can better respond to its local customers needs.



- ★ Headquarters
- Manufacturing
- ▲ R&D Facility
- Distribution & CSC
- Sales & Tech Support

The leading global partner in protecting the integrity of critical infrastructure

Berry Plastics warrants that the product conforms to its chemical and physical description and is appropriate for the use stated on the technical data sheet when used in compliance with Berry Plastics written instructions. Since many installation factors are beyond the control of Berry Plastics, the user shall determine the suitability of the products for the intended use and assume all risks and liabilities in connection herewith. Berry Plastics liability is stated in the standard terms and conditions of sale. Berry Plastics makes no other warranty either expressed or implied. All information contained in this brochure is to be used as a guide and is subject to change without notice.



CORROSION PROTECTION GROUP

Headquarters : Berry Plastics Tapes & Coatings Division, Franklin MA, USA

Franklin, MA, USA
 Tel: +1 508 918 1714
 US Toll Free: +1 800 248 0149
 Fax: +1 508 918 1910
 CPG@berryplastics.com

Houston, TX, USA
 Tel: +1 713 676 0085
 US Toll Free: +1 888 676 7202
 Fax: +1 713 676 0086
 CPGH@berryplastics.com

Tijuana, Mexico
 Tel US: +1 858 633 9797
 Fax US: +1 858 633 9740
 Tel Mexico: +52 664 647 4397
 Fax Mexico: +52 664 607 9105
 CPGTJ@berryplastics.com

Westerlo, Belgium
 Tel: +32 14 722500
 Fax: +32 14 722570
 CPGE@berryplastics.com

Baroda, India
 Tel: +91 2667 264721
 Fax: +91 2667 264724
 CPGIN@berryplastics.com

Local Distributor / Representative:

For contact details of local Distributors / Representatives
 Please visit www.berrycpg.com.

www.berrycpg.com